

## FTTH Fiber Optic Panels

### Quick Details

Place of Origin: Shenzhen, China (Mainland);

Brand Name: OPTICO;

Color: White/Black;

Port: 12/24/48;

box: 19" Rack, cabinet mountable;

Optical fiber input: 4 ports;

Adapter output: up to 48 ports;

Adapters:LC/SC/FC

Material: Cold-rolled Steel;

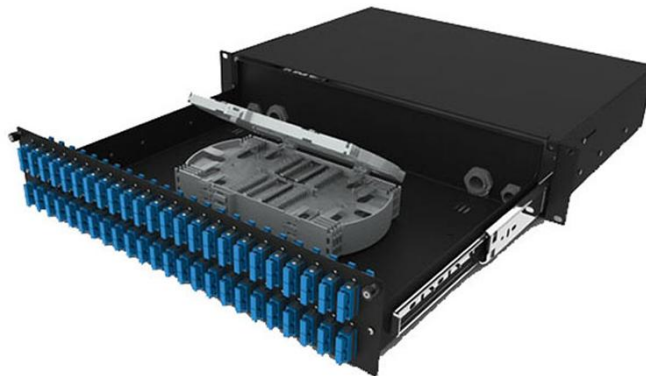
Working temperature: -40°C ~ + 60°C;

Lateral pressure-resistance: 500N;

Resistance: 750N;

Packaging Details: 450mm\*430mm\*350mm;

Delivery Time: 7~12 Work Days;



### Specifications:

FTTH Fiber Optic Panels

1. guiding hoops
- 2.aluminum body,electrostatic
- 3.light structure,fine-looking appearance

### Features:

- 19" Rack, cabinet mountable
- Excellent design
- Tightness and durable
- Optical fiber input: 4 ports

- Adapter output: up to 48 ports
- Fiber pigtail can provide reliable, perfect protection
- The core and casing is insulation
- Operate and install easily
- FC/SC/ST/Others Adapters for Option, available.

### Application of FTTH Fiber Optic Panels:

Local Area Network;  
CATV Network;  
FTTx System;  
Wide Area Network;  
Test Instruments;

### Specification:

Technical Parameters:

Material	Cold-rolled steel
Finished product	black appearance, light and low
Cassette (splices trays)	2-cassettes
Cable input	2 cable entry ports
Adapters	Available for the installation of FC/SC/ST/Others Adapters
Working temperature	-40℃ ~ + 60℃
Design standard	TIA/EIA568.C, ISO/IEC 11801, En50173, IEC60304, IEC61754, EN-297-1
Curvature radius	≥40mm
Extra loss in the splice tray	none
Lateral pressure-resistance	500N
Resistance	750N

### Shipping Ways:



Company Pictures:

