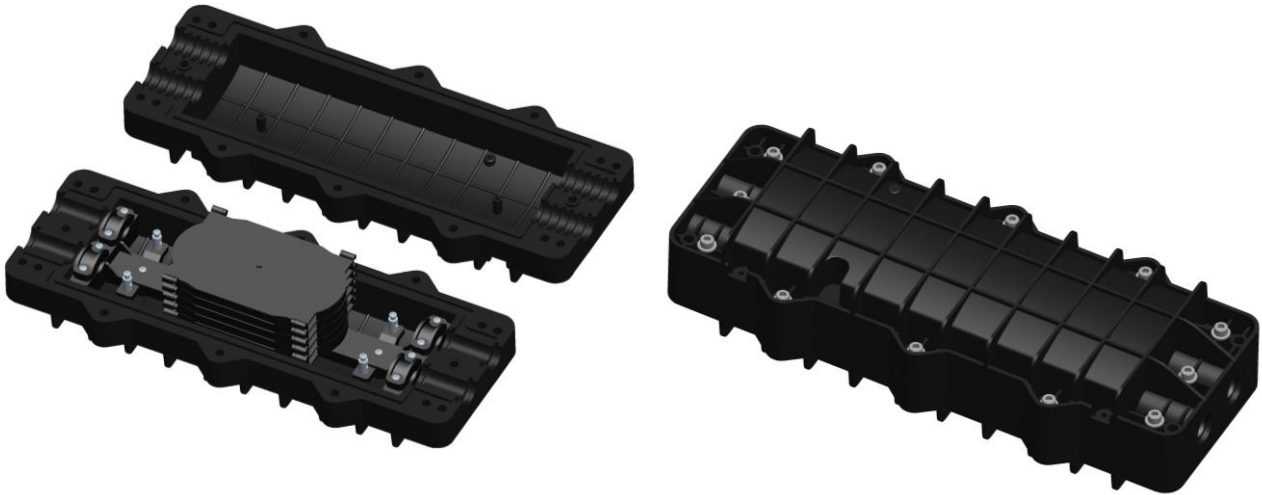


Horizontal Fiber Optic Splice Closure

CH028

Description:

CH028 is an inline type fiber optic splice closure for optical fiber splicing, cable protection. There is silicone sealing gasket between the cover and bottom. It can be outdoor aerial hang application.



Features:

Reasonable design for cable protection.

Material: PP plastic for base and cover; ABS plastic for inside parts; Silicone for sealing gasket.

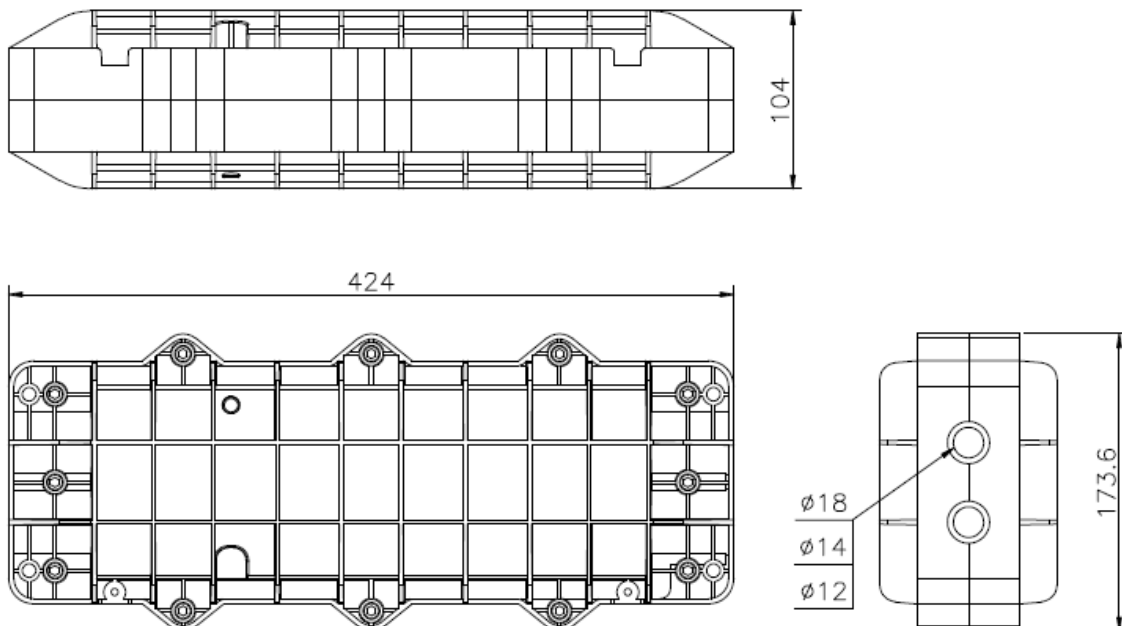
4 cable ports (2 in 2 out) for max. 19mm diameter optical cable entry & exist.

Max. 5pcs splice tray, each 24 fibers; max. 120 fibers capacity.

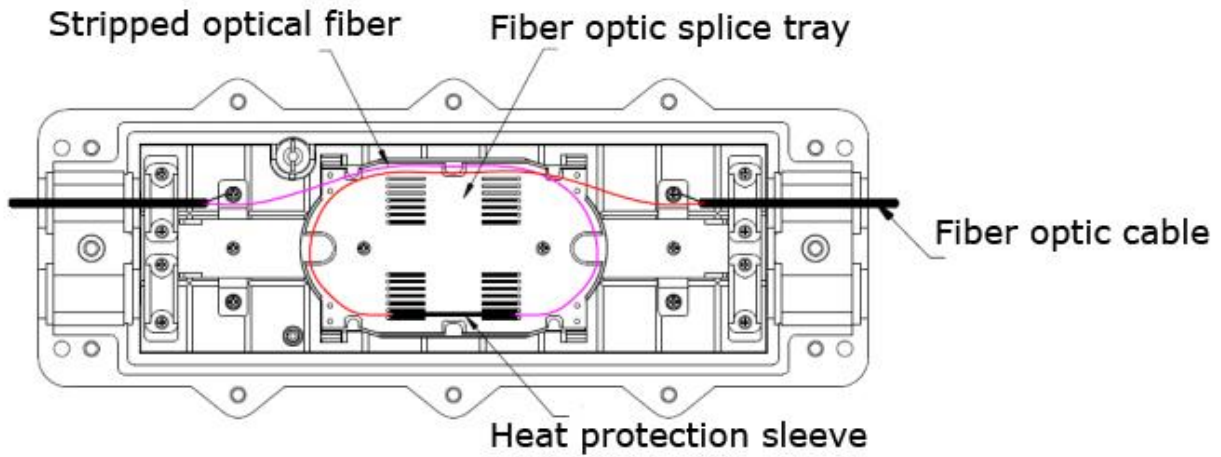
With fixing cable strengthen core parts.

Dust-proof and waterproof, IP68.

Dimension:



Using instruction:



Accessories:

Item	Specification	Qty
Heat protect shrinkable sleeve	60mm*3.0*1.5	As per using capacity
Cable tie	3mm*120mm	4 pcs
Inner hexagon spanner	S6	1 pc
Screw	M4*25	2 pcs
Screw nut	M4	2 pcs
Plug cap	Φ28*42mm	2 pcs
Plastic gasket	Φ28*Φ12*2.7	4 pcs
Plastic gasket	Φ28*Φ14*2.7	4 pcs
Plastic gasket	Φ28*Φ18*2.7	4 pcs
Adhesive tape	15mm*2mm*950mm	1 reel
Screws	M5*8	2pcs
Aerial hook		2 pcs