

# Standard MTP/MPO Trunk Cable Datasheet

Ideal for data center structured cabling connections.



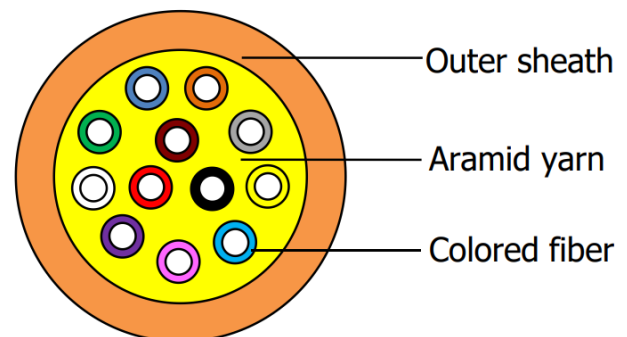
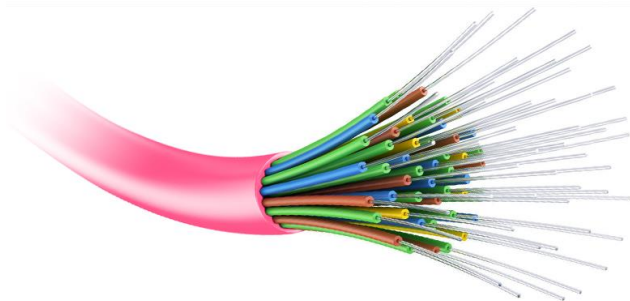
## • Description

MTP structured cabling provides a layered structure for the network, and will provide multiple connection solutions through the aggregation layer, which can reduce the problem of cluttered cables. The MTP trunk patch cords provided by OPTICO have the advantages of ultra-low loss, bending insensitivity, high stability and reliability.

## • Features

- High quality Hakusan ceramic ferrules
- US Conec/Senko/OPTICO brand MTP/MPO are available
- High density cabling, easy to install and manage
- Ultra insertion loss and high density
- CE/CPR/ISO/ROHS √
- 100% 3D tested by Sumix /Temperature tested/Loss tested before delivery
- High and low temperature cycle test
- Stable data interchangeability

## • Cable structure



Structural Diagram

- Technical Specifications

Item	Parameter
Fiber Count	8-144 fibers
Fiber Mode	Single-mode/Multi-mode
Ceramic Ferrule	Hakusan Inc.
Connector A	MTP/MPO Male/Female
Connector B	MTP/MPO Male/Female
Polish Type	APC/UPC(Single-mode);UPC(Multi-mode)
Polarity	Type A/B/C
Jacket Ratings	OFNP/LSZH/PVC
Outer Cable Diameter(mm)	3.0
Minimum Bending Radius	10D/20D(Static/Dynamic)

Optical Testing	Parameter
Insertion Loss(dB)	<0.25(super low loss);<0.35(Low loss);<0.70(Standard loss)
Return Loss(dB)	SM:UPC≥50,APC≥60; MM: UPC≥20
Wavelength(nm)	1310/1550(Single-mode);850/1300(Multi-mode)
Operating Temperature(°C)	-40~85
Storage Temperature(°C)	-20~70

- Tips:

Due to the COVID-19, sorry that you and our team couldn't visit face to face with each other. In order to make the customers know us more, please visit our VR factory, it is just like you were really standing in our factory.

OPTICO Fiber Assemblies Production Line VR :<https://www.linked-reality.com/company/15555/en>